

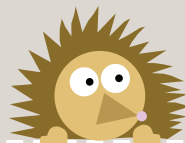
Crossword

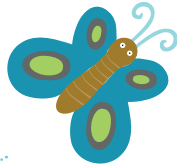


See whether you can complete this crossword. The clues are written on the other sheet and all the information can be found in the book 'At the end of the rainbow'. Enjoy!

The crossword puzzle grid consists of 18 numbered starting points for words:

- 1: 7-letter word starting at row 3, column 1.
- 2: 1-letter word starting at row 2, column 4.
- 3: 8-letter word starting at row 4, column 3.
- 4: 1-letter word starting at row 3, column 4.
- 5: 1-letter word starting at row 3, column 8.
- 6: 3-letter word starting at row 4, column 7.
- 7: 3-letter word starting at row 5, column 4.
- 8: 6-letter word starting at row 5, column 3.
- 9: 1-letter word starting at row 5, column 4.
- 10: 8-letter word starting at row 6, column 1.
- 11: 5-letter word starting at row 4, column 1.
- 12: 1-letter word starting at row 5, column 3.
- 13: 5-letter word starting at row 7, column 3.
- 14: 3-letter word starting at row 8, column 3.
- 15: 1-letter word starting at row 5, column 6.
- 16: 8-letter word starting at row 6, column 5.
- 17: 1-letter word starting at row 6, column 7.
- 18: 5-letter word starting at row 5, column 8.





CLUES

ACROSS

1. An arch of colours sometimes visible in the sky
3. Alvin & Alice's **YELLOW** chick
6. Alvin & Alice's **red** chick
7. Alvin & Alice's **VIOLET** chick
8. English scientist who did experiments with light
10. A spikey animal who lives in gardens and woodlands
13. Alvin's wife
14. Alvin & Alice's **blue** chick
16. An insect which starts being a caterpillar and ends up a beautiful creature with wings

DOWN

2. Alvin & Alice's **indigo** chick
4. Alice's husband
5. Alvin & Alice's **green** chick
9. Oval shaped objects which develop into chicks
11. A little grey/brown animal, which cats love to chase
12. A wormlike creature, which develops into a butterfly or moth.
15. The 'bed' in which the eggs are laid
17. A small stream
18. Alvin & Alice's **orange** chick

